



the future is safer with altro



Altro Safety Flooring

solutions for a demanding world

www.altro.com

As Altro continuously innovate and develop, please visit www.altro.com
or consult your local Sales Representative for the latest product range information

Company overview

Altro.
An established
company with new
ideas.

Altro are a world-leading specialist manufacturer and supplier of safety flooring, founded in 1919. Our success is due to inspired innovation from our people, to match the evolving needs of our customers for floors that are slip-resistant, hygienic and durable.

Hygiene and Safety Specialist

Altro are the inventors of safety flooring. The unique construction of Altro's slip-resistant, hygienic flooring provides an impermeable, sheet vinyl safety floor that will perform and look good even after years of hard service. Safety flooring is of particular value in areas where the combination of safety, hygiene and durability is vital, such as hospitals, care homes and in the food and catering industries.

Research and development

The right to market leadership has to be earned. That's why Altro value research and development so highly. We listen to customers' needs and innovate to provide the right solution. Altro's development of safety flooring is the perfect example. Our advances in cleanability and new manufacturing techniques have resulted in safety floors that are easy to maintain as part of a regular cleaning regime and retain their looks.



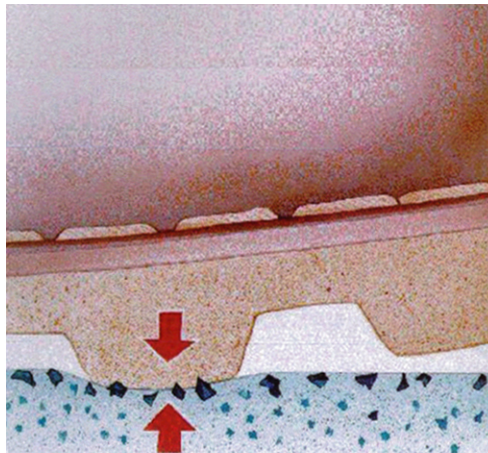
Committed to the highest international standards

As an international business Altro are committed to a uniform quality management system compliant with EN ISO 9001:2008.

Altro and the environment

In 2009 Altro became the first manufacturer to recycle safety flooring. Accredited to ISO 14001:2004, Altro champion a sustainable environmental approach, viewing the minimum statutory controls as precisely that: the minimum. We continually strive to reduce our environmental impact at every stage of production, so that you can make informed choices for the long-term sustainability of your projects. See exactly how Altro achieve this on page 39 and by visiting www.altro6steps.com.

Safety flooring - how does it work?



Essential Safety Flooring Collection

Altro's unique, patented construction of flexible, high-grade vinyl with slip-resistant grains throughout the wear layer of the safety flooring, ensures a durable surface that is slip-resistant for the life of the flooring.

How vinyl safety flooring works

Altro safety flooring appears smooth on the surface but provides a high level of slip resistance when walked on. The pressure created by walking over safety flooring causes the aggregates in the flooring to stand proud and rub against the shoe, creating friction. Because of this, Altro safety flooring remains slip-resistant, even with spillages upon it.

Why safety flooring

- Smooth flooring can be easy to clean but not slip-resistant when wet
- Ceramic safety flooring can be slip-resistant but the relief and grout can make it difficult to clean
- Altro safety flooring provides excellent slip resistance; the smooth surface makes it easier to clean, while the integral roughness of the aggregates provides slip-resistance, even with spillages

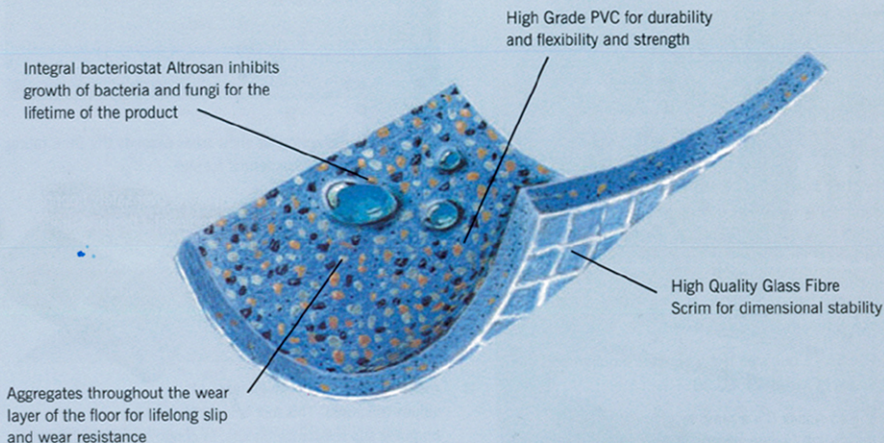
Why Altro safety flooring

Altro slip-resistant safety flooring is a modern solution, meeting the highest standards of safety and hygiene.

- Slip-resistant, even when wet, throughout lifetime of floor
- Impervious surface, grout-free
- Coves to wall joints for rounded corners
- Contains Altrosan integral bacteriostat to combat bacterial growth
- Incorporates Altro Easyclean Technology for improved cleanability
- Resilient surface, comfortable underfoot, contributes to reduced ambient noise levels
- Homogeneous and heterogeneous options available in high quality PVC, which have aggregates throughout the wear layer of the floor, to guarantee long-lasting performance



Traditional safety flooring



Science behind Altro safety flooring:

- varieties of aggregate (including silicon carbide, quartz and aluminium oxide) are embedded in sheet vinyl to prevent slips and falls
- integral bacteriostat and fungicide are incorporated into the material
- slip-resistant and hygienic properties throughout
- high quality reinforced glass fibre scrim provides strength and dimensional stability
- built-in advanced cleaning technology



Highlight on Sectors



Healthcare

Altro safety flooring takes pride of place in any care home or hospital design scheme. Altro safety flooring offers a watertight, impervious system, making it ideal for wet rooms including bathrooms, barrier-free shower rooms and catering areas. The Altro safety flooring range has inherent hygiene qualities, due to the incorporation of Altrosan, which inhibits bacterial growth and minimise the risk of hospital borne infections and cross-contamination.

Altro have developed a range of resilient safety flooring to live up to your sense of style, without compromising on performance. It is ideal for areas such as patient treatment rooms, corridors, entrances, communal rooms and bedrooms in care homes; areas where the need for slip resistance, hygiene, durability and comfort is paramount. The Altro safety flooring range offers a superior combination of these features, compared to that provided by carpets or smooth floors.

With a specialist range of 2-4mm safety flooring, you can choose a design varying from the traditional to the modern, be regular to the homely. Furthermore, you can rest assured that you will satisfy your duty of care and meet your standards for hygiene, with flooring which incorporates Altro Asyclean Technology and therefore stays looking good for years to come.

Leisure and Retail

For interior safety flooring with impact, Altro offer a complete range of contemporary, traditional, minimalist and striking flooring solutions, which make a statement in any retail or leisure setting.

Durable, hard-wearing, hygienic surfaces, which offer slip-resistance and comfort underfoot are among the qualities which make Altro safety flooring perfect for areas such as showers, changing rooms, entrances and pool surrounds.

A tough flooring solution, that has safety as its top priority, reduces the slip risk, which is a major cause of accidents. Our construction of flexible, high-grade vinyl incorporating mineral grains throughout the thickness, not only delivers slip resistance and a durable surface, but also peace of mind.



Food, drink and hospitality

Altro safety flooring is durable for hard-working environments and has been put through its paces by the food and drink industry for the past 50 years.

Altro's unique construction provides a slip-resistant, resilient and durable safety flooring, which is ideal for use in greasy and wet environments, while providing a surface that performs to the highest standards of hygiene and maintenance. The different thicknesses of flooring make the range suitable for a variety of locations.

Floorings with medium to high slip resistance ratings give the right balance of minimising slip risk with providing good cleanability, making them the perfect option for the unique requirements of different food preparation environments.

Fully bonded vinyl flooring with hot welded joints can provide a watertight and tankable system. The addition of Altroster™ bacteriostat is proven to inhibit the growth of bacteria. What is more, all Altro safety flooring benefits from Altro Easyclean Technology, providing improved cleanability. For even more enhanced cleaning and excellent chemical resistance products incorporating Altro Maxis Technology are available – see each product page for details.

Whether used in food and beverage factories, slaughterhouses, bakeries, commercial kitchens, serveries, bars or storerooms, Altro have a specialist solution for any project, where food or drink is prepared or processed.

Education

Altro bring you interior surfaces that deliver a safe flooring solution, while creating stylish, dirt-hiding and stimulating environments for the education sector.

We offer a wide range of colour options to suit any mood or application – from entrance foyers and corridors to changing rooms and classrooms.

The safety of the young is a particular focus of the EU Campaign for a Safer Europe. The number of accidents in Europe involving children, adolescents and young adults is high and the long-term consequences not only affect people's lives, but have financial implications too in terms of continual healthcare costs. A tough flooring solution, that has safety as its top priority, reduces the slip risk, which is a major cause of accidents. Our construction of flexible, high-grade vinyl incorporating mineral grains throughout the thickness, not only delivers slip resistance and a durable surface, but also peace of mind.



Altro Stronghold™ 30 / K30



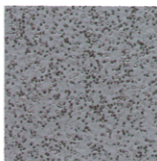
Abyss K3001
WR100 A1M100

LRV 7



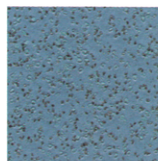
Dolphin K3010
WR86 A1M86

LRV 21



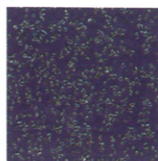
Monsoon K30153
WR81 A1M81

LRV 24



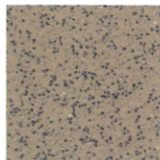
Surf K30412
WR71 A1M71

LRV 20



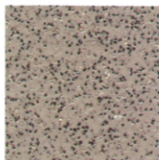
Lagoon K30910
WR39 A1M34

LRV 7



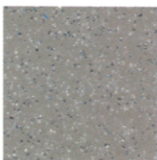
Maple K30522
WR24 A1M27

LRV 31



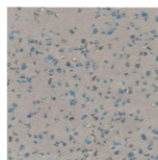
Oyster K30215
WR20 A1M20

LRV 36



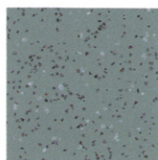
Tundra K30500
WR153 A1M239

LRV 17



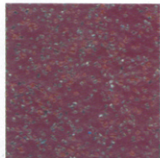
Camel K3017
WR64 A1M239

LRV 26



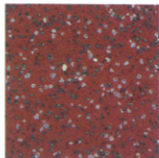
Skyline K30332
WR52 A1M52

LRV 24



Velvet K30365
WR256 A1M148

LRV 8



Russet K30262
WR41 A1M41

LRV 14

Codes: **LRV** = Light Reflectance Value, **WR** = Weldrods, **A1M** = Mastic

For a seamless appearance, colour matched weldrods and mastics are available.

EXPERIENCE HAS SHOWN THAT PRINTING CANNOT REPRODUCE COLOURS ACCURATELY. IF COLOUR CHOICE IS CRITICAL, PLEASE REQUEST A SAMPLE OF THE MATERIAL




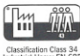







Altro Stronghold 30 / K30

A 3mm thick, homogeneous flooring designed for safety in wet and greasy conditions where frequent spillage is likely. It is resilient and comfortable to walk on, with good acoustic properties, combining excellent slip resistance with long term durability and ease of cleaning. This is Altro's highest rated product for slip resistance with an R12 rating.

- Incorporates Altrosan bacteriostat for enhanced hygiene and Altro Easyclean Technology for enhanced cleanliness and appearance retention

Please see Product Selector Chart on pages 32-33 for full details.	
Dimensions:	15m x 2m
Format:	Roll
Thickness:	3mm

 EN14041 0120 GB06/72664 Manufactured by: Altro Ltd. Works Road Letchworth Garden City SG6 1NW United Kingdom	 Chair chair continuous use EN 425	 Water tightness EN 13553	 Classification Class 34 Industrial Heavy EN 685
	 Resistance to Chemicals EN 423	 Slip Resistance EN 13893	 Classification Class 48 Commercial very heavy EN 685
	 Reaction to fire EN 13501-1	 Unmanned slip EN 13845	



sample ordering
 Tel: +44 1462 707 700
 E-mail: samples@altro.com
 product information:
 Tel: +44 1462 707 600
 E-mail: enquiries@altro.com

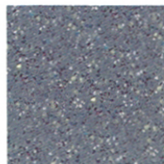


Altro Designer™ 25 / D25



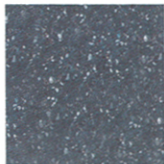
Jet D2501
WR100 A1M100

LRV 6



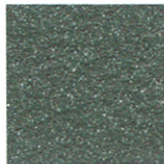
Storm D25903
WR82 A1M82

LRV 16



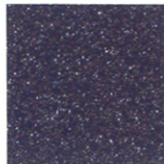
Midnight D25421
WR72 A1M72

LRV 11



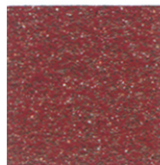
Teal D25906
WR147 A1M147

LRV 13



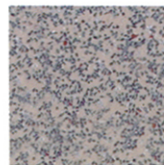
Twilight D25910
WR39 A1M34

LRV 8



Rust D25907
WR150 A1M238

LRV 10



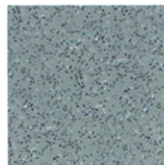
Bone D25215
WR20 A1M20

LRV 37



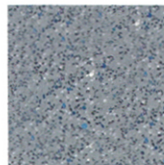
Biscuit D25904
WR146 A1M20

LRV 30



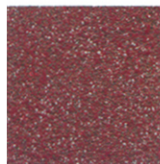
Skyline D25332
WR52 A1M52

LRV 25



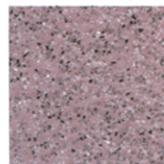
Fog D25153
WR81 A1M81

LRV 27



Victoria D25908
WR148 A1M148

LRV 9



Rosa D25905
WR149 A1M149

LRV 30

Codes: **LRV** = Light Reflectance Value, **WR** = Weldrods, **A1M** = Mastic

For a seamless appearance, colour matched weldrods and mastics are available.

EXPERIENCE HAS SHOWN THAT PRINTING CANNOT REPRODUCE COLOURS ACCURATELY. IF COLOUR CHOICE IS CRITICAL, PLEASE REQUEST A SAMPLE OF THE MATERIAL












Altro Designer 25 / D25

A 2.5mm thick, homogeneous safety flooring, which includes coloured quartz crystals in exciting base colours to enhance any interior scheme. The long-term durability and excellent slip resistance are complemented by Altro Easyclean Technology for a lasting attractive appearance.

- Incorporates Altrosan bacteriostat for enhanced hygiene

Please see Product Selector Chart on pages 32-33 for full details.	
Dimensions:	20m x 2m
Format:	Roll
Thickness:	2.5mm

 EN14041 0120 GB06/72664 Manufactured by: Altro Ltd. Works Road Letchworth Garden City SG6 1NW United Kingdom	 Color shift continuous use EN 425	 Water tightness EN 13553	 Classification Class 34 Industrial Heavy EN 685
	 Resistance to Chemicals EN 423	 Slip Resistance EN 13893	 Classification Class 43 Commercial very heavy EN 685
	 Abrasion to the EN 13501-1	 Unmatted slip EN 13845	



sample ordering
 Tel: +44 1462 707 700
 E-mail: samples@altro.com
 product information:
 Tel: +44 1462 707 600
 E-mail: enquiries@altro.com

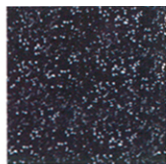


Altro Walkway™ 20 / VM20



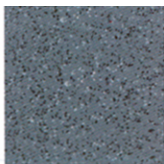
Black VM20892#
WR100 A1M100

LRV 6



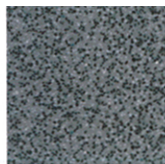
Midnight VM20421
WR72 A1M72

LRV 11



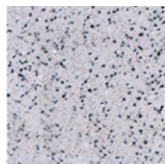
Dolphin VM2010#
WR86 A1M86

LRV 21



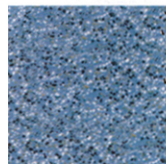
Fog VM20153*#
WR81 A1M81

LRV 27



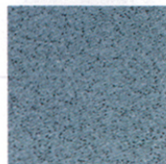
Cloud VM2014#
WR79 A1M191

LRV 41



Blue VM20412#
WR71 A1M71

LRV 22



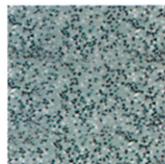
Waterfall VM20912
WR155 A1M135

LRV 31



Pesto VM20921
WR242 A1M242

LRV 20



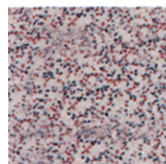
Skyline K30332
WR52 A1M52

LRV 24



Avocado VM20924
WR137 A1M137

LRV 34



Bone VM20215#
WR20 A1M20

LRV 37



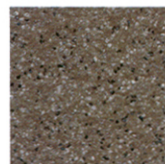
Biscuit VM20907
WR146 A1M20

LRV 30



Buffalo VM20925
WR63 A1M239

LRV 21



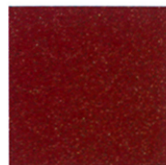
Tundra VM20910
WR153 A1M239

LRV 17



Kelp VM20923
WR89 A1M89

LRV 14



Cherry VM20920#
WR148 A1M148

LRV 10



Terracotta VM20922
WR157 A1M42

LRV 12



Maize VM20908
WR152 A1M152

LRV 30

* Indicates static dissipative grade available.
For code use standard product code followed by 'sd'. Due to the addition of Static Dissipative properties, Altro Walkway 20 SD does not have exactly the same appearance as that shown above. SD (static dissipative) for areas such as computer rooms where required.

Indicates colour also available in Altro XpressLay, see page 34 for further information or visit website.

Codes: LRV = Light Reflectance Value, WR = Weldrods, A1M = Mastic

For a seamless appearance, colour matched weldrods and mastics are available.

EXPERIENCE HAS SHOWN THAT PRINTING CANNOT REPRODUCE COLOURS ACCURATELY. IF COLOUR CHOICE IS CRITICAL, PLEASE REQUEST A SAMPLE OF THE MATERIAL



Altro Walkway 20 / VM20

Popular 2mm homogeneous flooring for excellent durability in a wide range of locations where health and safety standards dictate underfoot safety.

- Incorporates Altrosan bacteriostat for enhanced hygiene and Altro Easyclean Technology for enhanced cleanability and appearance retention

Please see Product Selector Chart on pages 32-33 for full details.

Dimensions:	20m x 2m
Format:	Roll
Thickness:	2mm



EN14041
0120
GB06/72664

Manufactured by:
Altro Ltd. Works Road
Letchworth Garden City
SG6 1NW
United Kingdom



Chair casters
continuous use EN 425



Water tightness
EN 13553



Classification Class 34
Industrial Heavy EN 685



Resistance to
Chemicals EN 423



Slip Resistance
EN 13893



Classification Class 43
Commercial very heavy EN 685



Abrasion to film
EN 13501-1



Unchanged slip
EN 13845

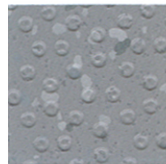


sample ordering
Tel: +44 1462 707 700
E-mail: samples@altro.com

product information:
Tel: +44 1462 707 600
E-mail: enquiries@altro.com

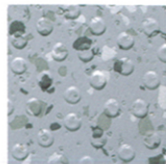


Altro Marine™ 20 / T20



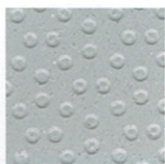
Shark IPT208
WR201 A1M84

LRV 24



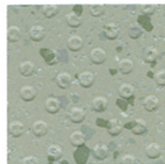
Steam IPT20807
WR85 A1M85

LRV 37



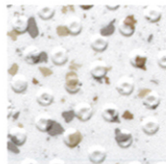
Gull T20813
WR79 A1M191

LRV 46



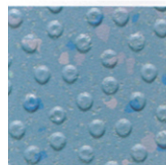
Seagrass IPT20814
WR137 A1M137

LRV 37



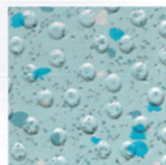
Cascade IPT20809
WR105 A1M1

LRV 71



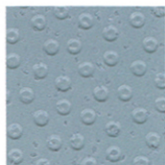
Tide IPT20808
WR71 A1M71

LRV 21



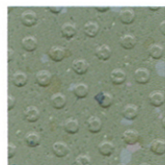
Rainfall IPT20810
WR135 A1M135

LRV 43



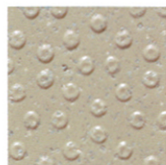
Marlin T20811
WR203 A1M203

LRV 34



Fen IPT20815
WR242 A1M242

LRV 19



Reef T20801
WR20 A1M20

LRV 41

Codes: **LRV** = Light Reflectance Value, **WR** = Weldrods, **A1M** = Mastic

For a seamless appearance, colour matched weldrods and mastics are available.

EXPERIENCE HAS SHOWN THAT PRINTING CANNOT REPRODUCE COLOURS ACCURATELY. IF COLOUR CHOICE IS CRITICAL, PLEASE REQUEST A SAMPLE OF THE MATERIAL



Altro Marine 20 / T20

This carefully textured, homogeneous 2mm thick surface is specifically designed with peduncles for safety with wet, bare feet or soft soled footwear. It is ideal for shower and drying areas, swimming pool and whirlpool surrounds, changing rooms and other wet areas requiring slip resistance.

It complies with the DIN 51097 Class C and EN 13845 Class ESb ramp tests for barefoot areas. It co-ordinates well with Altro Walkway 20 / VM20 or Altro Impressionist II / IP20 in adjacent areas.

- Incorporates Altrosan bacteriostat for enhanced hygiene

Please see Product Selector Chart on pages 32-33 for full details.

Dimensions:	20m x 2m
Format:	Roll
Thickness:	2mm



EN14041
0120
GB06/72664

Manufactured by:
Altro Ltd, Works Road
Letchworth Garden City
SG6 1NW
United Kingdom



Center drain
continuous use EN 425



Water tightness
EN 15553



Classification Class 34
Industrial Heavy EN 685



Resistance to
chemicals EN 423



Slip Resistance
EN 13893



Classification Class 43
Commercial very heavy EN 685



Reaction to fire
EN 13501-1



Enhanced Slip
EN 13845



sample ordering
Tel: +44 1462 707 700
E-mail: samples@altro.com
product information:
Tel: +44 1462 707 600
E-mail: enquiries@altro.com





Altro Maxis 25

The 2.5mm thick, homogeneous Altro Maxis 25 contains Altro Maxis™ Easyclean Technology for superior cleanability and colour retention; in addition, less water and detergent are required when cleaning.

It is ideal for high-traffic areas, such as supermarkets, corridors, stairs, airport terminals, where an attractive appearance and safety underfoot are critical.

- Incorporates Altrosan bacteriostat for enhanced hygiene

Please see Product Selector Chart on pages 32-33 for full details.

Dimensions:	20m x 2m
Format:	Roll
Thickness:	2.5mm



EN14041
0120
GB06/72664

Manufactured by:
Altro Ltd. Works Road
Letchworth Garden City
SG6 1NW
United Kingdom



Chair castor continuous use EN 425



Water tightness
EN 13553



Classification Class 34
Industrial Heavy EN 685



Resistance to
Chemicals EN 423



Slip Resistance
EN 13893



Classification Class 43
Commercial very heavy EN 685



Reaction to fire
EN 13501-1



Enhanced Slip
EN 13845



sample ordering
Tel: +44 1462 707 700
E-mail: samples@altro.com
product information:
Tel: +44 1462 707 600
E-mail: enquiries@altro.com



Altro Timbersafe™ II



Rustic Pine TS2012
WR226 A1M226

LRV 29



Mellow Beech TS2011
WR224 A1M224

LRV 36



Fruit Wood TS2014
WR259 A1M225

LRV 27



Blond Oak TS2007
WR225 A1M225

LRV 37



Classic Oak TS2008
WR15 A1M15

LRV 28



Warm Cherry TS2013
WR160 A1M160

LRV 13



Golden Beech TS2010
WR171 A1M246

LRV 22



Rich Walnut TS2015
WR227 A1M227

LRV 11



Traditional Oak TS2009
WR258 A1M258

LRV 15

Codes: **LRV** = Light Reflectance Value, **WR** = Weldrods, **A1M** = Mastic

For a seamless appearance, colour matched weldrods and mastics are available.

EXPERIENCE HAS SHOWN THAT PRINTING CANNOT REPRODUCE COLOURS ACCURATELY. IF COLOUR CHOICE IS CRITICAL, PLEASE REQUEST A SAMPLE OF THE MATERIAL



Altro Timbersafe II

Without compromising beauty or slip resistance, Altro Timbersafe II combines the worlds of wood-look flooring and safety. This 2mm safety flooring is ideal for busy public areas such as corridors, shops, wards, education, catering and receptions.

The revolutionary Altro Maxis Easyclean Technology affords a safety floor that's easy to clean too, requiring less water and detergent, while providing enhanced, colour-fast appearance retention.

- Incorporates Altrosan bacteriostat for enhanced hygiene

Please see Product Selector Chart on pages 32-33 for full details.

Dimensions:	25.64m x 1.56m
Format:	Roll
Thickness:	2mm



EN14041
0120
GB06/72664

Manufactured by:
Altro Ltd. Works Road
Letchworth Garden City
SG6 1NW
United Kingdom



Castor chair
continuous use EN 425



Water tightness
EN 13553



Classification Class 34
Industrial Heavy EN 685



Resistance to
Chemicals EN 423



Slip Resistance
EN 13893



Classification Class 43
Commercial very heavy EN 685



Reaction to fire
EN 13501-1



Enhanced Slip
EN 13845



sample ordering
Tel: +44 1462 707 700
E-mail: samples@altro.com

product information:
Tel: +44 1462 707 600
E-mail: enquiries@altro.com



Altro Suprema™



Thor SU2014
WR232 A1M72

LRV 14



Orpheus SU2008
WR192 A1M134

LRV 19



Njord SU2016
WR231 A1M73

LRV 9



Balder SU2018
WR229 A1M239

LRV 22



Odin SU2015
WR45 A1M238

LRV 10



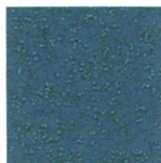
Valhalla SU2017
WR233 A1M233

LRV 19



Jupiter SU2006
WR190 A1M180

LRV 20



Zeus SU2002
WR194 A1M71

LRV 17



Ull SU2019
WR146 A1M20

LRV 27



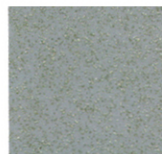
Heimdall SU2020
WR157 A1M42

LRV 11



Mercury SU2010
WR191 A1M191

LRV 46



Aphrodite SU2011
WR185 A1M85

LRV 37



Freja SU2013
WR230 A1M203

LRV 33



Minerva SU2009
WR20 A1M20

LRV 41



Helios SU2004
WR189 A1M152

LRV 36



Pegasus SU2012
WR105 A1M1

LRV 69



Apollo SU2005
WR186 A1M56

LRV 30



Poseidon SU2003
WR193 A1M154

LRV 22

Codes: **LRV** = Light Reflectance Value, **WR** = Weldrods, **A1M** = Mastic

For a seamless appearance, colour matched weldrods and mastics are available.

EXPERIENCE HAS SHOWN THAT PRINTING CANNOT REPRODUCE COLOURS ACCURATELY. IF COLOUR CHOICE IS CRITICAL, PLEASE REQUEST A SAMPLE OF THE MATERIAL

Product selection

Your guide to choosing and specifying safety flooring.



Typical applications are shown below. These do not represent an exclusive list. For your exact project requirements please contact Altro directly.

Market Segment	Hospitality/ Food prep / Commercial Kitchens	Healthcare/Medical	Industrial	Education	Retail/Offices	Wet Areas	Static Sensitive Areas
Applications	Food preparation areas, Food processing, Food service areas, Food storage, Commercial kitchens, Bakeries, Bar serveries (wet & dry), Canteens, Wet areas	Operating rooms, Patient treatment/recovery rooms, Pharmacies, Waiting rooms, Geriatric wards, Laboratories, Autopsy rooms, Mortuaries, Veterinary clinics, Wet areas	Food processing, Chemical processing, Machine shops, Pharmaceutical labs	Practice rooms, Corridors, Changing rooms, Wet areas, Kitchens / canteens	Cafeterias, Circulation areas, Shops and showrooms, Storage areas, Clean rooms, Print rooms	Bathrooms, showers, Areas of frequent spillages, Hydrotherapy pools, Whirlpools, Swimming pool decks, Wet chemical areas	Computer rooms, Electronic assembly areas
TRADITIONAL RANGE							
Altro Atlas™ 40 (X40)	•	•	•	•		•	
Altro Classic™ 25 (X25)	•	•	•	•	•	•	
Altro Stronghold™ 30 (K30)	•	•	•	•	•	•	
Altro Designer™ 25 (D25)	•	•	•	•	•	•	
Altro Walkway™ 20 (VM20)	•	•	•	•	•	•	
Altro Walkway™ 20 SD* (VM20 SD)							•
Altro Impressionist™ II (IP20)	•	•	•	•	•	•	
Altro XpressLay™ (XL22)	•	•	•	•	•	•	
ALTRO MAXIS RANGE							
Altro Maxis™ 25	•	•	•	•	•	•	
Altro Suprema™ (SU20)	•	•		•	•		
Altro Timbersafe™ II (TS20)	•	•		•	•		
BAREFOOT RANGE							
Altro Marine™ 20 (T20)	•	•		•		•	

* SD = Static Dissipative (VM20 SD)

Altro Whiterock™ the perfect partner.

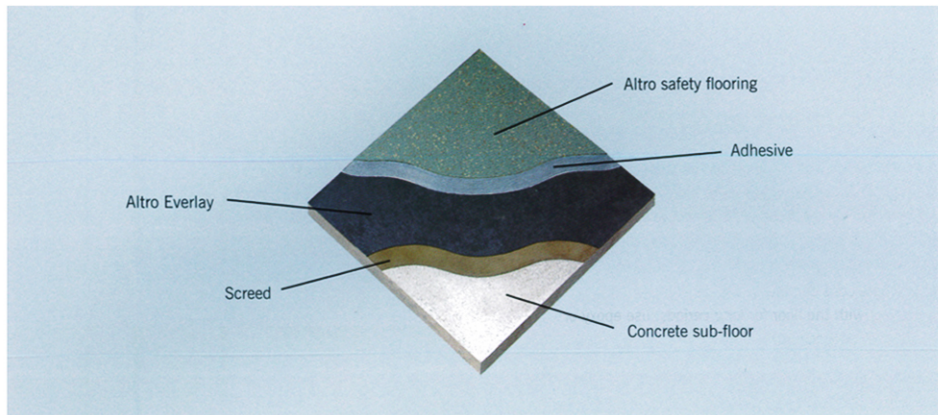
Altro Whiterock wall cladding can be seamlessly joined leaving dirt and water nowhere to hide. Incorporating integral Altrosan bacteriostat for extra hygiene, Altro Whiterock is the perfect complement to Altro safety flooring in bathrooms, washrooms and kitchen areas.

Not available in all countries, check with your Altro representative



					
Thickness	Weight/m2	Roll length	Roll width	No of colours	Homogenous
4,00 mm	4,5 kg	12,5 m	2,00 m.	5	•
2,50 mm	2,9 kg	20 m.	2,00 m.	7	•
3,00 mm	3,4 kg	15 m.	2,00 m	12	•
2,50 mm	2,5 kg	20 m.	2,00 m.	12	•
2,00 mm	2,4 kg	20 m.	2,00 m.	18	•
2,00 mm	2,4 kg	20 m.	2,00 m.	1	•
2,00 mm	2,4 kg	20 m.	2,00 m.	12	•
2,20mm	2.6 kg	20 m.	2,00 m.	17	
2,50 mm	3.1 kg	20m	2,00 m.	15	•
2,00 mm	2,5 kg	20m	2,00 m.	18	
2,00 mm	2,6 kg	25,64 m	1,56 m.	9	
2,00 mm	2,5 kg	20 m.	2,00 m.	10	•

Safety flooring – the complete system



Preparation of sub-floors

Sub-floors must be dry, sound and free from dust and grease. The floor must be smooth. The requirements of BS 8203:2001 + A1:2009 and international equivalents apply where relevant.

Direct-to-earth sub-floors must incorporate an efficient damp-proof membrane. If not, a surface damp-proof membrane must be applied.

Underlay

Where additional sound absorption is required, an acoustic underlay may be required. Please consult your local Altro representative about Altro Acoustic Underlay 1101.

Altro Everlay™ A and B are designed to overcome the problems sometimes encountered in laying sheet floorings over new or old sub-floors.

Altro Everlay can be laid over a variety of surfaces, such as old vinyl tiles, sheet metal, access floors, damp sub-floors or those contaminated with oil or paint. They provide a continuous base over tiles, which is stabilised and resistant to damp. Please consult your local Altro representative about Altro Everlay.

Altro XpressLay™, 2.2mm loose lay safety flooring can be installed up to 97% relative humidity, on the RH hygrometer reading. For further information on this adhesive-free safety flooring visit www.altro.com

Welding

All joints should be hot welded, using a hot air welding gun and Altro welding rod.

Adhesives

A complete range of adhesives is supplied by Altro:

- under normal conditions use acrylic adhesive
- for vertical surfaces use a contact adhesive
- in areas subject to extreme cleaning, temperature changes, or where considerable quantities of liquids will be in contact with the floor for long periods, use epoxy or polyurethane adhesive
- use conductive adhesive with static dissipative floor covering

Sealing

AltroMastic is a specially formulated sealing compound for use where Altro floorings abut edges, skirtings, wall surfaces etc or where the flooring is cut around pipes, upstands door frames etc. AltroMastic is not recommended for use in trafficked areas, as a welded joint will give superior performance. Where flooring abuts drainage channels, access covers, quarry tiles etc a clamping or welding system should be used.

Installation

Altro safety flooring must be installed according to the Altro Safety Flooring Installation guidelines. Please consult your local Altro representative for more information, the relevant product datasheets and installation guides or visit www.altro.com

If you have any concerns about installation, maintenance, adhesives or possible staining risks, please consult your local Altro distributor or request a copy of the Altro Installation DVD or Altro Chemical Resistance Guide available free of charge.



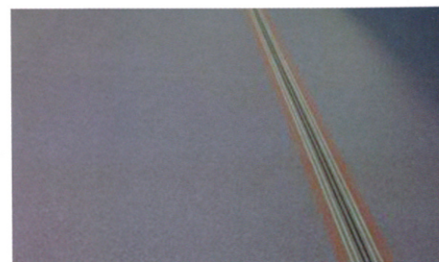
Clamping Drain



Clamping Channel



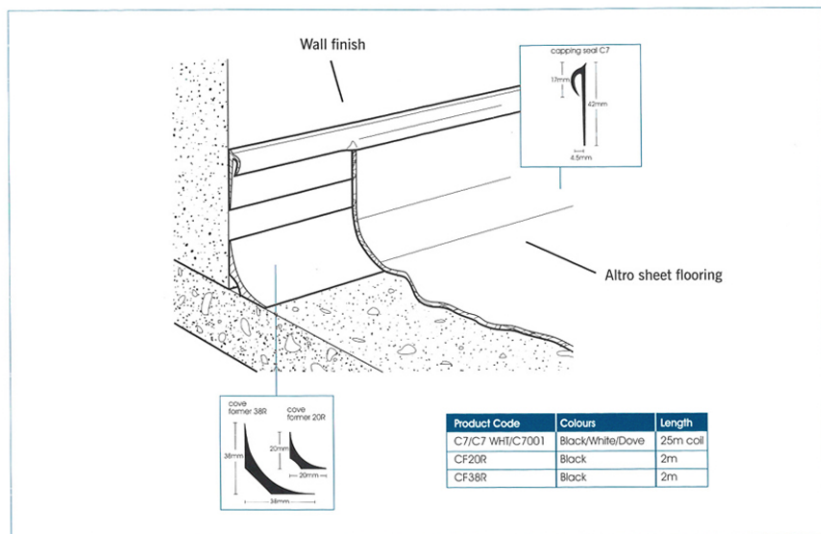
Stair Finish



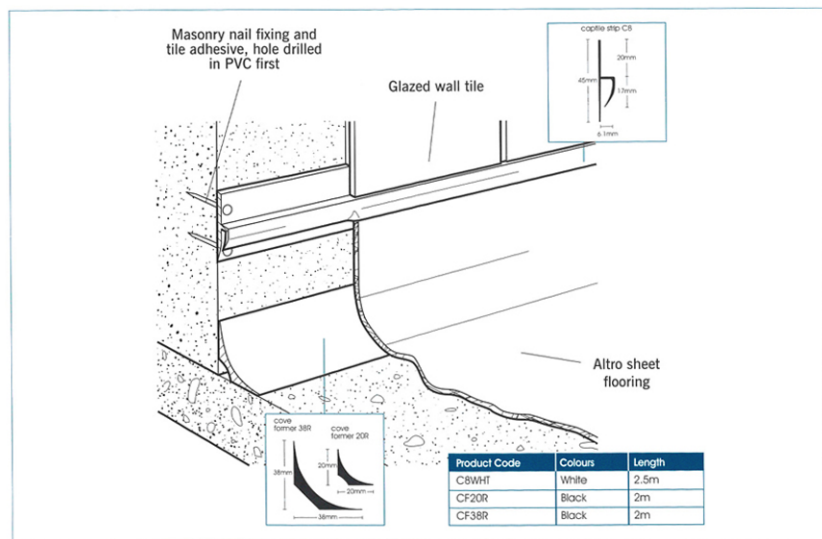
Expansion Joint

Safety flooring – the complete system

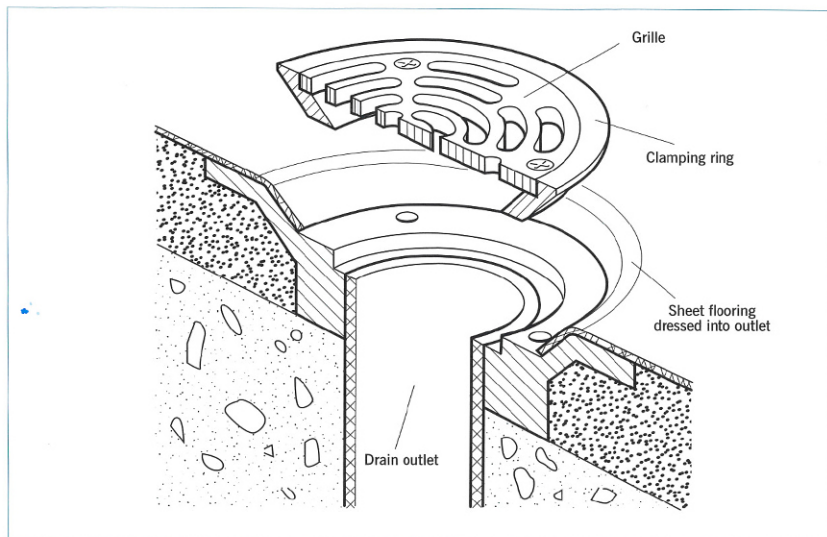
Self-covered with cove former and capping seal



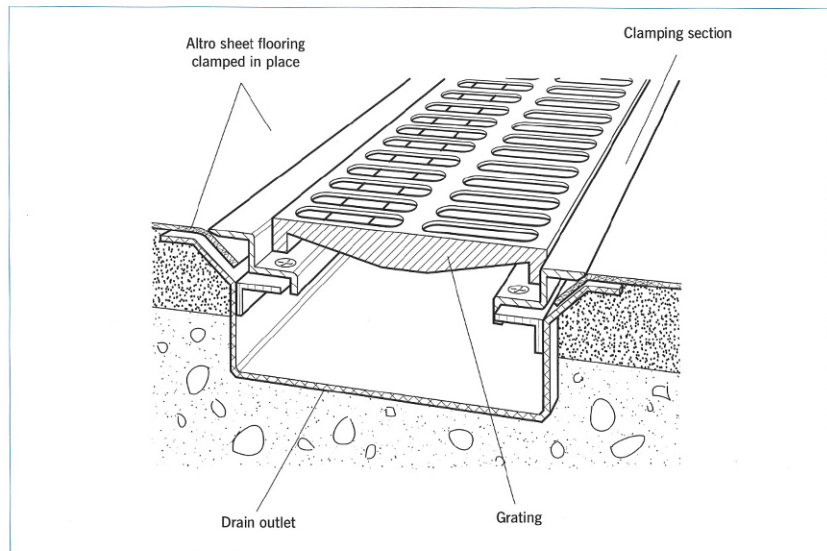
Self-covered with cove former & captile strip C8 to wall tiles



Detailing - Drain outlet



Transition with clamping channel



Life cycle costs

Independent analysis

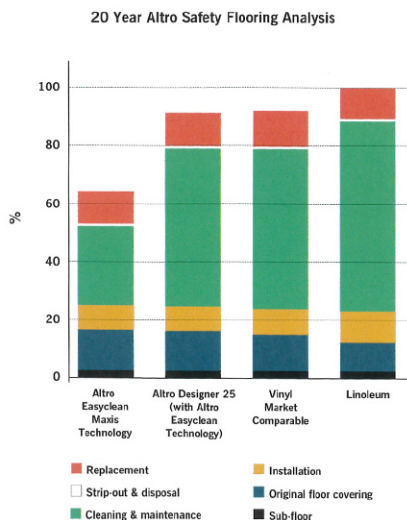
Specifiers need to know how much flooring and walling products will cost over their expected lifespan. This is why Altro have commissioned an independent life cycle cost analysis, conducted by BWA Facilities Consultancy. When reviewing these costs you will need to take into account any special circumstances affecting:

- the sub-floor or sub-wall
- the original flooring or walling material itself
- installation
- cleaning and maintenance
- disposal
- replacement
- level of use

For further information on how these costs were reached, contact your local Altro representative.

Cost analysis result:

- all of Altro's interior surfaces deliver impressive value over their lifetime



The life expectancy of Altro safety flooring takes into account that it:

- is composed of high quality PVC
- has aggregate all the way through the wear layer
- will not lose slip resistance during lifetime
- provides long-lasting performance

Altro were the first manufacturer to incorporate an easyclean technology into our safety flooring for enhanced cleanliness and appearance retention of safety flooring.

Those ranges which incorporate Altro Maxis Easyclean Technology (indicated on each product page) are even easier to clean and require less water and detergent.

Cleaning

As in any area where hygiene and safety are important, regular maintenance should be carried out.

There are three simple stages:

1. apply hot water and chemical cleaner, agitate on the floor surface to loosen dirt and suspend it in the water and chemical solution.
2. remove the dirty water.
3. rinse the surface thoroughly.

Recommended cleaning methods, frequency and intensity of cleaning depend on individual applications. Please consult Altro's Guide to Cleaning.

Altro safety flooring is not recommended for areas where lit cigarette ends are likely to be dropped or trodden into the floor, where solvents (such as ketones and aromatic solvents) are in regular use or where organic dyes or floor cleaners containing pine oil are used. Some materials are known to cause staining, typical examples of these are rubber tyres, rubber mats, asphalt and bitumen materials etc.

6 Steps to sustainability



As a leading manufacturer and supplier of flooring and walling solutions we've already taken great strides towards creating a sustainable business, as part of our continuous program of not just meeting but exceeding environmental expectations. With this in mind, we've identified 6 key steps that will improve our social, economic and environmental performance.



Step 1: Product Development

Altro safety flooring conforms to a number of international emission standards including the AgBB in Germany. It is also FloorScore® certified, (low VOCs) in accordance with CHPS Section California 01350 Specification for high performance schools, and contributes to the LEED environmental certification scheme.

Most Altro products are made from PVC and although PVC is not always viewed in a positive light, when considered over its entire life cycle, PVC-based floor coverings perform favourably against competing materials.

Altro safety flooring products achieve the highest possible BRE Global environmental ratings of A+/A in the major building applications of Health, Education, Retail and Commercial. All Altro sites are certified to ISO 14001:2004, the environmental management standard. All Altro products meet the European REACH requirements.



Step 2: Recycling

Altro are the first manufacturer to recycle safety flooring in the EU. All Altro safety flooring is 100% recyclable and contains post-consumer waste as an integral raw material. Some Altro safety flooring products have up to 20% recycled content. Altro participate in the Golv Återvinning flooring recycling scheme in Sweden, is a member of EPFLOOR and is a founder member of Recofloor in the UK, the industry's vinyl take-back scheme for post-installation vinyl flooring.



Step 3: Carbon Footprint

We've looked closely at our manufacturing processes, our buildings and our travel policies. This has already resulted in substantial carbon savings. We're also making sure that, where possible, new sites are built to environmentally sound standards.



Step 4: Energy Saving

Like any growing business our energy consumption increases with product output and so we are constantly looking for ways of becoming more energy efficient. We worked with the Carbon Trust in 2007 to save over 1,000 tonnes of carbon dioxide and between 2007 and 2009 reduced our total energy consumption by over 7%.



Step 5: Waste Reduction

The installation of the first in-house safety flooring recycling system means that we have not sent any waste PVC to landfill since 2007. The identification of further recycling opportunities and elimination of waste at source of the remaining waste streams have resulted in a total reduction in waste to landfill of 70% between 2007 and 2010.



Step 6: Social Responsibility

Altro operate with integrity and honesty. It is our fundamental belief that a sustainable and responsible business will ultimately become a more successful one.

From an environmental point of view, we always aim to successfully balance the practical needs of our customers with our responsibility to the environment. As our business grows, these concerns will remain high on our agenda.

Visit us at www.altro6steps.com or contact us on + 00 44 1462 707 600 to find out more about Altro and our commitment to sustainable performance, sign up for our newsletter or request a copy of Altro for a Sustainable Environment.